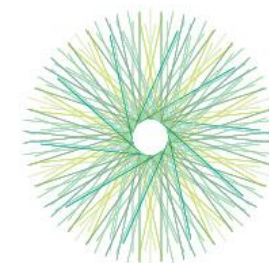


EIP-AGRI: From OG project to impact

Building the innovation ecosystem for the future

17-18 OCTOBER 2018, SPOLETO



eip-agri
AGRICULTURE & INNOVATION



funded by



European
Commission

Programme

Wednesday 17 October

Learning about EIP-AGRI implementation:
achieving impact

09:55-10:15 Simplification and reporting for EIP Inspiration and examples

- *Marina Hadjiyanni, Unit F1 – Conception and consistency of rural development, DG AGRI, European Commission*
- *Michael Schrörs, Head of Unit EU affairs, agricultural research and innovation, Lower Saxony Ministry for Food, Agriculture and Consumer Protection, DE*
- *Simona Cristiano, Policy researcher, CREA – Center for Politics and Bioeconomy, IT*
- ***Lisa van Dijk, Knowledge Exchange Programme manager, Royal Agricultural University, Cirencester, UK***

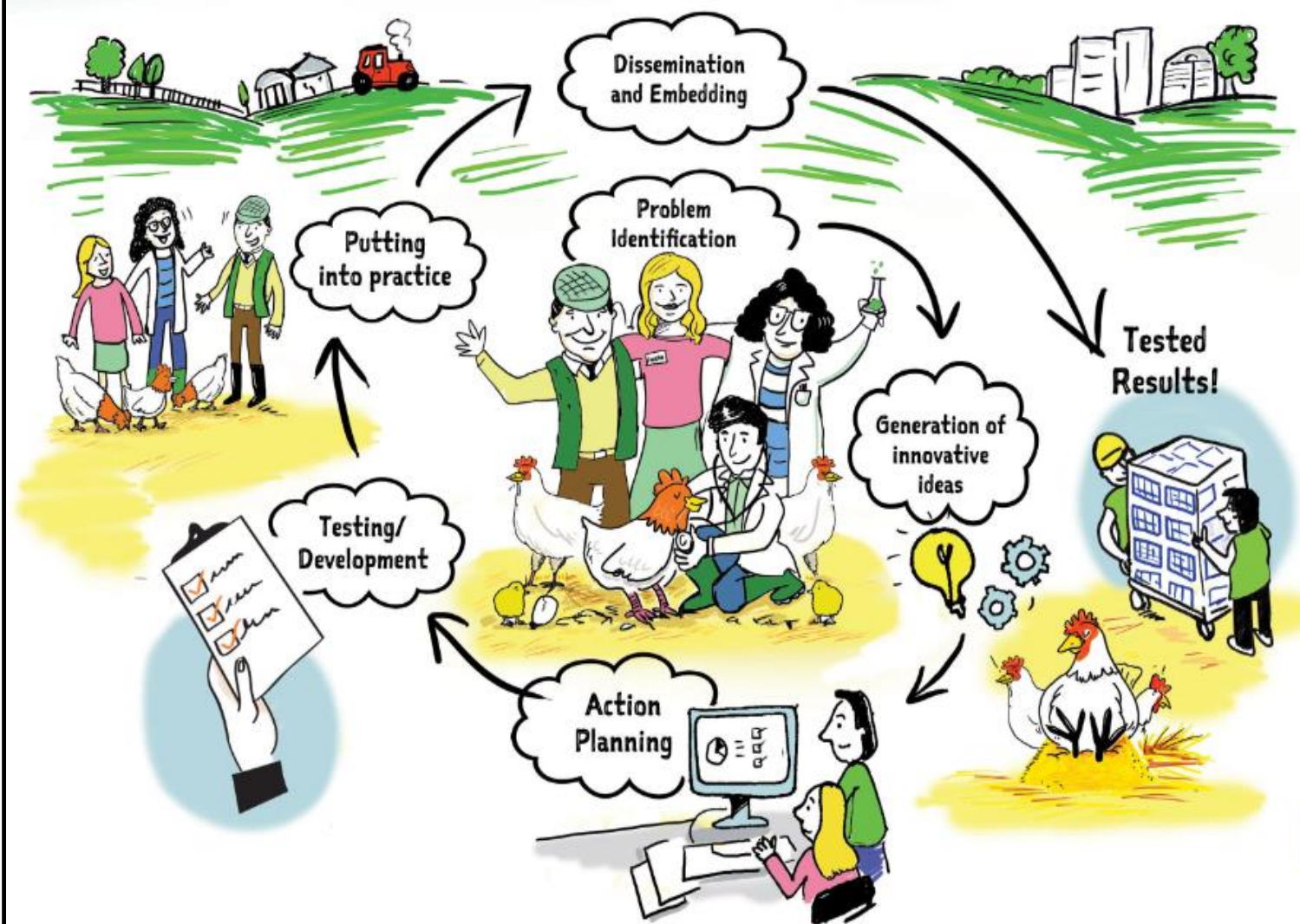
10:15-10:25 Welcome by the host

- *Alessandra Pesce, Undersecretary of State, Ministry of Agricultural, Food, Forestry Policies and Tourism (MiPAAFT)*

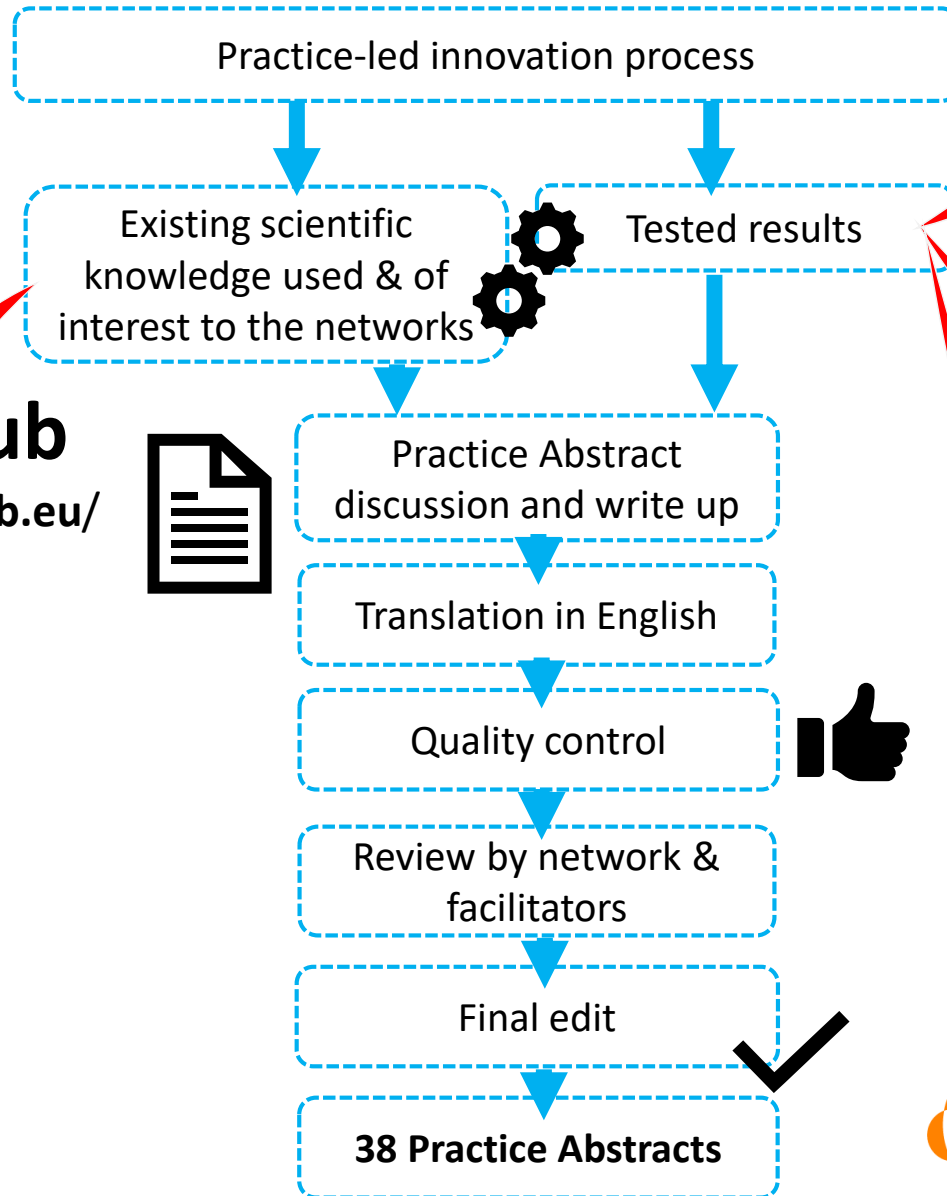


Hennovation

Multi-actor, Practice-led Innovation Networks



Practice Abstract development process



HenHub
www.henhub.eu/

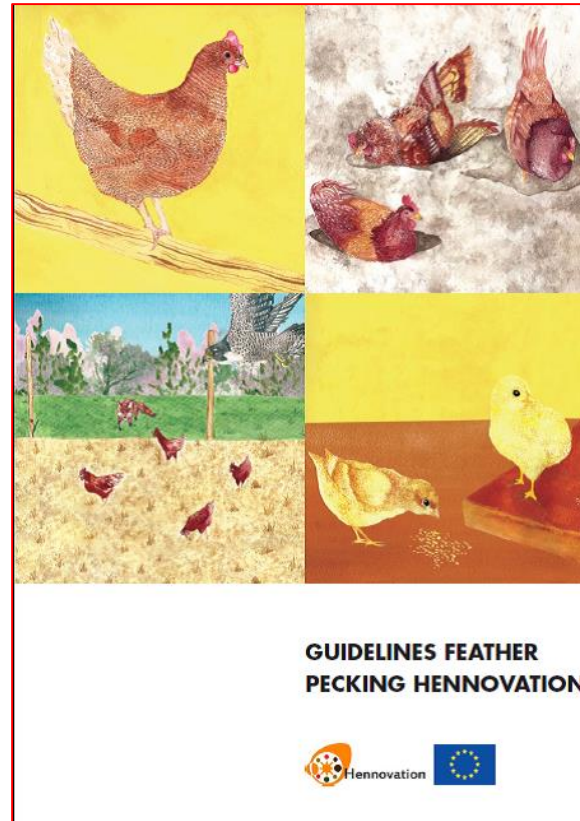


Dissemination & use of Practice Abstracts



Visual © EleanorBeer.com 2017

Translated & shared across networks in different countries



GUIDELINES FEATHER PECKING HENNOVATION



Included in extension guidelines & on-line course

HENNOVATION TECHNICAL NOTE NO. 2



A superior method of depopulating end-of-lay hens from enriched (colony) cages

Problem
The egg industry has long practised depopulation by carrying inverted hens by their legs, several in each hand, for long distances from cages to transport modules outside laying houses. This process is aversive to hens and very arduous for catching teams. In view of this, our network was motivated to search for an improved welfare friendly method of depopulation that would overcome these problems to the satisfaction of workers, producers, processors, welfare groups and consumers.

Solution
A method of moving hens from the house aisles, immediately in front of their cages, was developed, tested and put into practice in large FC houses on two farms. This required the design of a suitable trolley, fitted with four swivel wheels, to convey depopulated hens within existing transport drawers to the transport modules outside. It was essential that this trolley should fit within the aisles and be readily manoeuvrable through and out of the house. Outside a slightly raised platform was required, together with front location plates, to enable the trolley to be closely aligned and docked with the waiting module so that the drawers could be smoothly transferred into it from the trolley using a pushing rod.



Application box
Theme: Depopulating
Production system: Furnished cages
Stock: End-of-Lay hens
Equipment: Specialist trolleys, each to hold 4 drawers, designed to dock with existing transport modules

Benefit – outcome

- Improved wellbeing of hens and catching team.
- Indications of reduced injured and dead hens on arrival at processing plant.
- Catchers liked the new method and it seemed to ease their workload.
- Time to load hens similar to traditional catching method but with potential to reduce with experience of the new method.
- The flat trolley roof can be used as a platform to reach hens in cages on upper tiers.



Hennovation 

This project is funded by the European Union

Developed into Technical Notes on topics of particular interest

LIAISON
Optimising interactive innovation

EURAKNOS

 **Hennovation**