

Grazing4Agroecology

Arno Krause

SCAR AKIS SWG Meeting 13
Budapest, Oct. 16th 2022

Grassland Center: Who we are



- **Legal entity:** Registered association (e.V.) since 2012
- **Mission:** Platform for co-design and innovation transfer to valorise the multifunctionality of grassland
- **Board:** Composed of all relevant grassland stakeholders
 - Farmers organisations
 - Government
 - Dairy Industry
 - Water-, Nature-, and Coastal protection organisations
- **Employees and location:** 19 employees, based in Lower Saxony, north Germany



Grazing4Agroecology:

Some key figures of the Thematic Network

- Started on September 1st, 2022
- Project term: 42 Months (until February 28, 2026)
- Total Project volume 2.999.996,00 Mio Euro
- Comprises 18 partners from 8 MS



18 G4AE Project Partners: Balanced in Europe and balanced between and Practice & Research

Participant Organisation Name	Short Name	Country
Grünlandzentrum e.V. (Coordinator)	GLZ	Germany
Georg-August-Universität Göttingen	UGOE	Germany
TEAGASC – Agriculture and Food Development Authority	Teagasc	Ireland
Goldcrop Limited	Goldcrop	Ireland
Centro di Sperimentazione Laimburg	Laimburg	Italy
Genossenschaft Bioland Südtirol landw. Ges.	Bioland ST	Italy
Consiglio Nazionale delle Ricerche	CNR	Italy
Chambre régionale d'Agriculture de Bretagne	CRAB	France
Institut National de la Recherche Agronomique	INRAE	France
Institut de L'Elevage	IDELE	France
Sveriges Lantbruksuniversitet	SLU	Sweden
Svenska Vallföreningen	SVall	Sweden
Consulai	Consulai	Portugal
Universidade de Evora	UEVORA	Portugal
Stichting Aeres Groep	Aeres	The Netherlands
Zuidelijke land- en tuinbouworganisatie Vereniging	ZLTO	The Netherlands
Universitatea de Stiinte Agricole si Medicina Veterinara Cluj	USAMV	Romania
Asociația Clusterul Agro-Food-Ind Napoca	ATC	Romania



Grazing4AgroEcology:

Why this project?



How successfully these positive effects are realized depends on how grazing is conducted.

Animal Welfare

Allowing to manage animals as naturally as possible

Income of Farmers

Grass as forage can optimize production costs

Societal

acceptance:
Preference for grazing

Improving food quality

(*omega-3 fatty acids*)

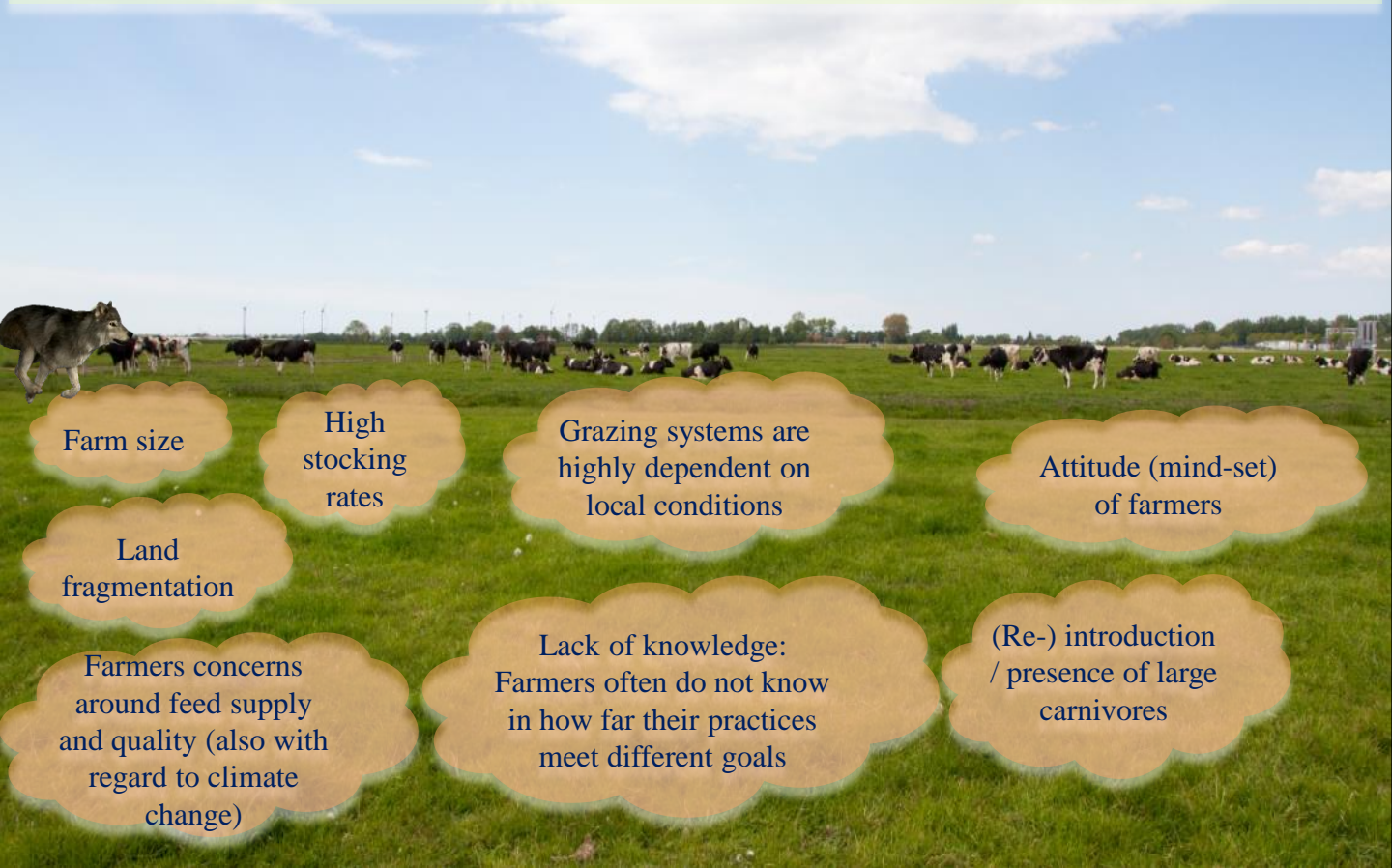
Carbon sequestration

Improving biodiversity

Reducing wildfires

Maintaining cultural landscapes

Grazing is generally declining in Europe (minus 10-20%) in the last decade, being a threat for many ecosystem services.



Farm size

High
stocking
rates

Grazing systems are
highly dependent on
local conditions

Attitude (mind-set)
of farmers

Land
fragmentation

Farmers concerns
around feed supply
and quality (also with
regard to climate
change)

Lack of knowledge:
Farmers often do not know
in how far their practices
meet different goals

(Re-) introduction
/ presence of large
carnivores

The overall objective of G4AE is to

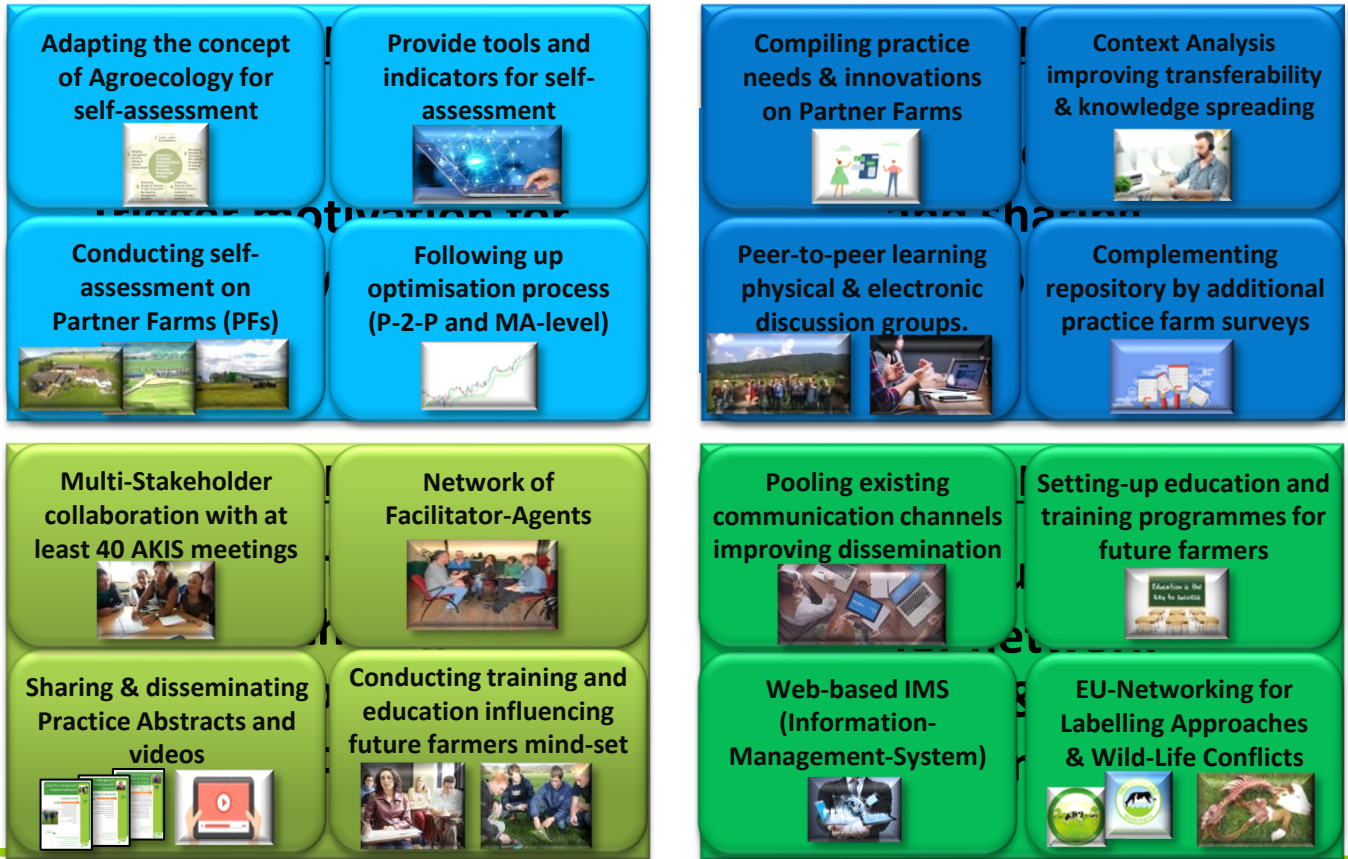
- Strengthen the farmers' capacities in promoting grazing of ruminants
- Optimize Grazing in a way that it meets positive economic, ecological, & societal goals, including animal welfare
- Reinforce National Grazing AKISs through multi-actor collaboration, co-creation and knowledge sharing



The Specific Objectives of Grazing4Agroecology



The 4 Specific Goals of Grazing4Agroecology



The components of the Grazing4Agroecology Network



Components of the G4AE Network



Grazing AKIS

The Facilitator Agents (FA) Network

- Connectors, integrators, moderators, brokers,...
- 16 FAs (2 per project MS)
- Moderate and facilitate all G4AE meetings
- Form a network withing the G4AE network
- Cross-border linking the national Grazing AKISs

Components of the G4AE Network



The Partner Farm Network (PFN)

- 120 farms (15x8)
- Foundation of the project in practice community
- Source of best-practices and innovation
- Conduct self-assessment based on agroecology
- Surveyed throughout the project in terms of optimisation

Components of the G4AE Network



The Young farmers groups

- National groups of young farmers (age <40) per project MS
- Moderated groups (10-15 each) meet twice a year
- Interact with project team: Applicability of results
- Have opportunity to meet internationally (“farmers tours”)
- Training and education

Components of the G4AE Network



The Scientific and Technical Working Group (STWG)

- Scientists and experts
- At least 1 member per partner (≥ 18)
- Determining indicators for self-assessment
- Improve transferability of best practices and innovation through context analyses

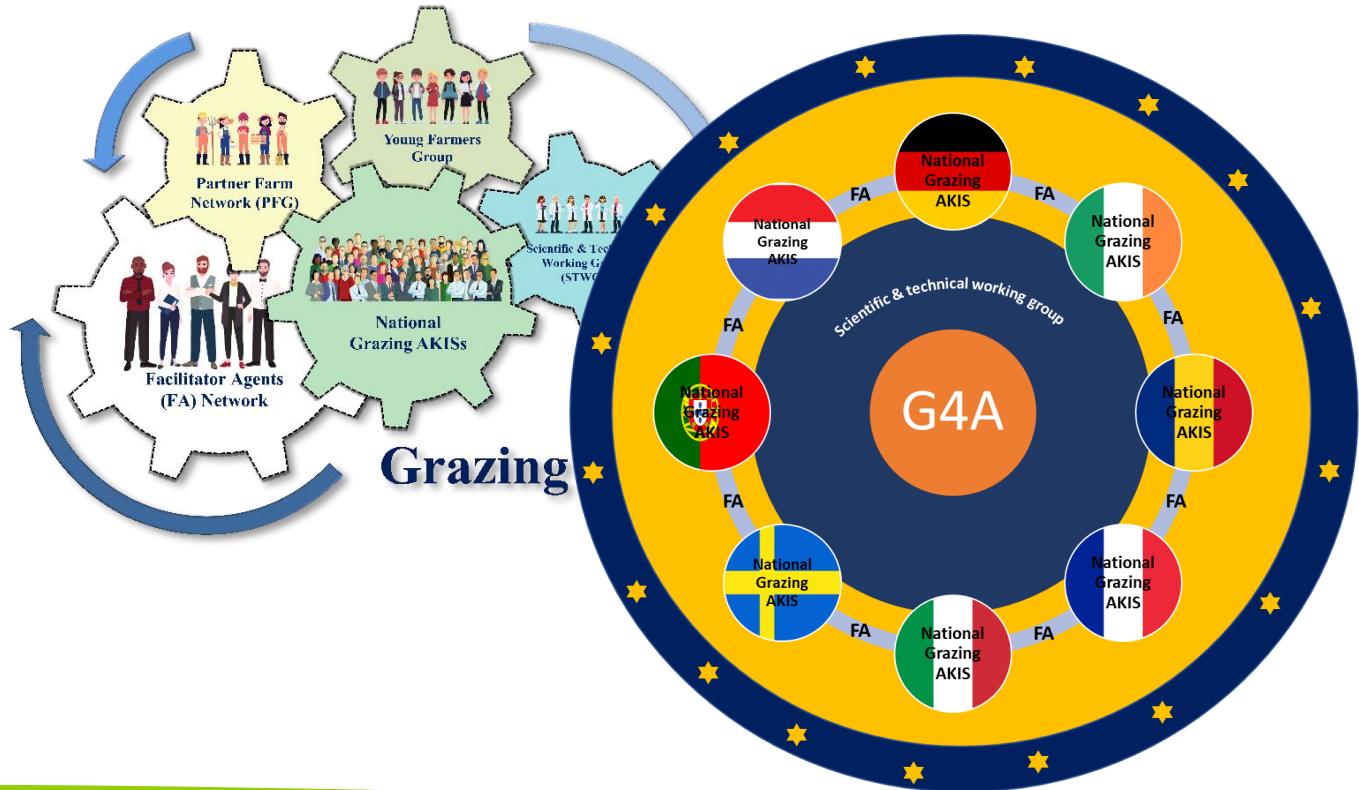
Components of the G4AE Network



The National Grazing AKISs

- 8 National Grazing AKISs
- Moderated by FAs
- Composed of actors linked to grazing sector (farmers, industry, NGOs advisory & society)
- Core for MA-approach
- Linking National Grazing AKISs forms international Grazing AKIS

Components of the G4AE Network



Grazing



The Grazing4Agroecology

concept

&

approach



Concept of Agroecology for aspects to assess and optimize grazing

Animal welfare

- Grass-based nutrition

Profitability, including production costs & -value:

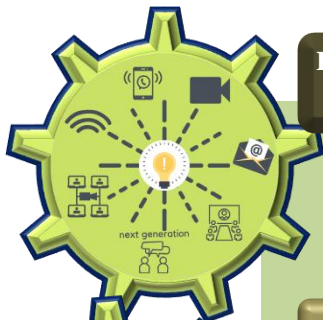
This will be a living inventory, which means that during the multi-actor approach further aspects might be taken into account.

Ecology and society

- Improving biodiversity
- nutrient cycling & regenerating soil
- greenhouse gases (GHG) reduction
- product quality for consumers



G4AE 3- tier approach for effective networking



Persistently super spreading of knowledge through digital interaction

- Videos, Webinars, digital groups, social media
- Empowering farmers to
- Embedding of grazing young generation

Boosting knowledge-sharing farmers with industry scientists

- Formalising and synthesising
- National and International
- 1,600 farmers reached
- Facilitator Agents Connected
- Linking Operational Groups

Peer-2-Peer knowledge

- Partner Farm Network: Embedding network in the practice of
- EIP-Agri and Practice Action
- Farmwalks for P-2-P knowledge
- Inventory of best practices
- Self-assessment of agroecology



Main Output:

- 120 Partner Farms (15x8)
- 120 Facilitator Agents Connected

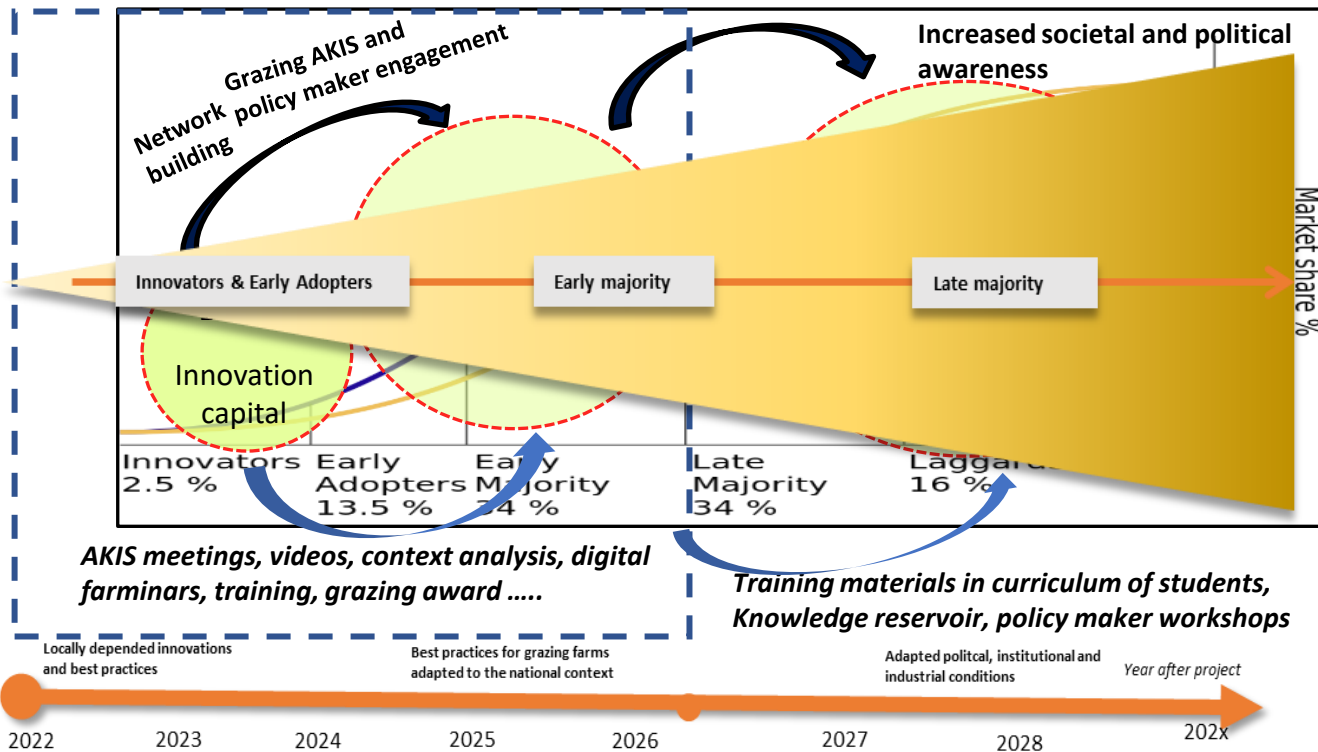
Main Output:


- Digital video-making, story-telling and tool training seminars for farmers
- Digital Farm-Walks
- IMS for digital knowledge spreading
- Periodic press-releases and weekly postings on social media
- 8 Cross-Border expert meetings connecting national AKISs
- Influencing young farmer's mind-set: Young farmers groups, interviews, national training and young farmers tours.
- 1 workshop engaging policy makers & 1 Policy paper



Concept of tapping and spreading knowledge

By tapping and enriching the Innovation Capital from the group of Innovators & Early Adopters G4AE will expand the network to the group of the Early Majority.





Grazing4Agroecology: Looking forward to discussing with you