

Education and Training in CAP AKIS Plans Estonia

Helena Pärenson

Adviser in Research and Development Department, Ministry of Rural Affairs

07/04/2022

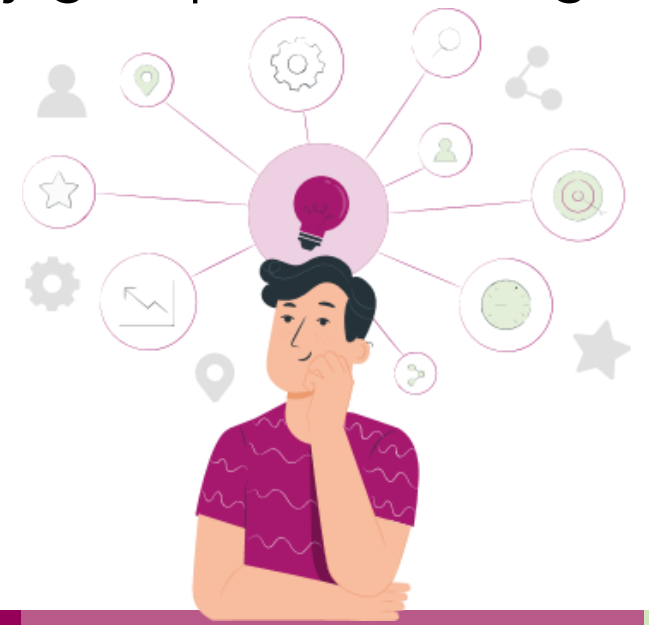


HOW to make educational systems and training more attractive to farmers? Can advisors play a role? How to engage them?

- Useful = attractive (quality and practical focus of curricula/training courses)
- Flexibility and life-long learning principle
- No one size fits all- solutions (identifying individual needs)
- Can range from active participation in seminar/study group to browsing publications on one's own

- Advisors as educators
- Advisors encouraging their clients

- Mixed groups



HOW to motivate education/training participants (farmers, farmworkers, advisors, students...)?

▸ Accessibility

- Making use of e-learning, knowledge reservoir etc ICT-based tools;
- Geographical balance when planning the events
- Travel time/cost

▸ Flexibility

- Vouchers – catering to individual needs and easy to use



WHAT: Which topics to select for education/ training and how to choose and prioritise these?

- Ministry (AKIS Coordination body) - national/strategic perspective, defining the main priorities
- The participants - feedback, incl. a wish list of topics
- **AKIS centre** (middle ground between sector, educators, ministry) - mapping the existing needs, analysing future needs, etc
 - The AKIS centre will choose the appropriate type of activity (format, topic, number of activities) based on the needs of the specific target group and the specific field of agriculture. There can be regional specifics (remote areas) and target group specifics (language, experience). Special attention to beginners.
 - A better overview of the the sector's needs and their possibilities for implementing new knowledge is an collective effort - researchers, practitioners, advisors, educators, experts, and the target group representatives involved upon planning the KE activities.

WHO & WHERE : How to organize the education/training? Practical aspects?

- ✦ Diversity!
 - ✦ Physical and online
 - ✦ E-training section in Knowledge Reservoir
 - ✦ Bus trainings (study trips)
- ✦ Location
 - ✦ Time (e.g. peak season of trainings vs balanced planning)
 - ✦ Events calendar (all AKIS events)





Thank you for your attention

Questions?

We will answer
them!



SCAR
Standing Committee
on Agricultural Research

