

SCAR
Standing Committee
on Agricultural Research



CAP AKIS Strategies Germany

Presentation by Miriam Ehret & Teresa Münch/Federal Ministry of Food and Agriculture (BMEL)/Division Research & Innovation

Speaker: Leonie Göbel/Federal Office of Agriculture and Food (BLE) /National Rural Support Unit (DVS)

06/04/2022



What do you do in your CAP AKIS Strategies to enhance knowledge flows and strengthening links between research and practice ?

✦ Knowledge flow between Bund and 16 Länder:

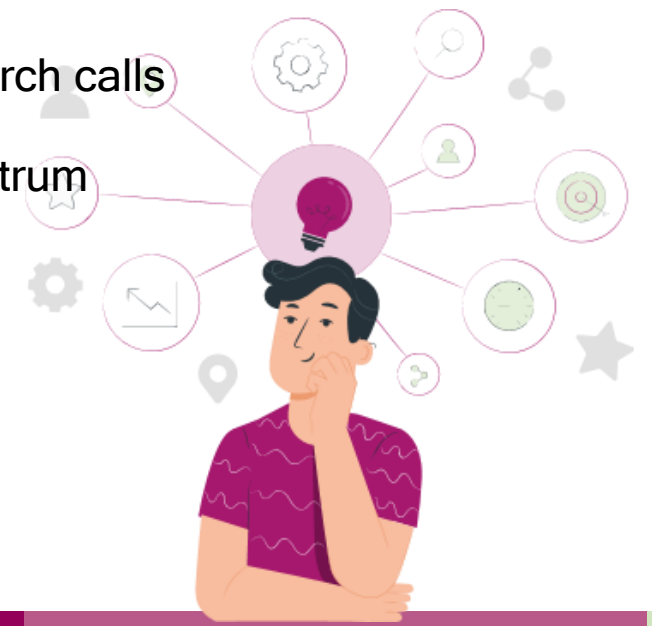
- So far, each Land appointed an AKIS coordinator.
- Regular meetings between AKIS coordinators of the Länder and Bund to discuss topics such as strengthening innovation and enhancing knowledge flow between Bund and Länder

✦ Knowledge flows between the Länder:

- Enhancing the links between different regional actors by strengthening already existing structures. E.g. expanding thematic exchange between innovation brokers and OGs organised by DVS

✦ Strengthening links between research and practice:

- Obligatory “Begleitforschung”(accompanying research) in BMEL research calls
- Further developing existing communication channels (e.g. Bildungsserver Agrar) knowledge reservoirs („Bundesinformationszentrum Landwirtschaft (BZL)“ und „Bundeszentrum für Ernährung (BZfE)“)
- Establishing an AKIS communication strategy



What do you do in your CAP AKIS Strategies to integrate farm advisory services within the AKIS?

- ✦ Making communication channels and networking structures already established and used by Länder or farm advisory services more transparent and making them also available for research institutions.
 - Optimising structures and processes to ensure relevant projects will be made available
- ✦ Integrating more farm advisors into OGs as innovation brokers or disseminators
 - To strengthen knowledge flows and transfer between research and practice

What do you do in your CAP AKIS Strategies to encourage interactive innovation projects (OGs, thematic networks, Horizon Europe MA projects....)

- ✦ Continuing the successful implementation of EIP-AGRI OGs and the successful work of DVS in providing networking and knowledge exchange for OGs and innovation brokers
- ✦ Strengthening and linking thematic networks following the example of “Netzwerk Fokus Tierwohl” (network animal welfare)
- ✦ Linking a farm network (“Betriebsnetzwerk”) with the envisaged European partnership on Agroecology Living Labs
 - To be used as a research infrastructure testing research results on their practical merits
 - Contributing to the implementation of farm-to-fork and biodiversity strategy



What do you do in your CAP AKIS Strategies to support digital transition serving effective AKIS?

Infrastructure, examples

- Via CAP, BMEL fosters the expansion of digital infrastructure in remote, rural areas with low population density. This allows farms access to modern ICTs.
- The intervention European Agricultural Fund for Rural Development (EAFRD) offers a broadband expansion/ICT for educational institutions to Länder. This allows e.g. blended counseling for farmers or blended learning for vocational students or adults

Digital ecosystems, equipment, examples

- Mix of interventions, e.g. productive investments in material assets of farms and promoting investments of individual farms, Setting up of young farmers and new farmers and rural business start-up

Any other initiatives you want to mention

▸ Participation in the CSA modernAKIS

- Establishing a well working governance between the different administrative levels in a strongly regionalized country will be one of the main challenges under the new CAP

Thank you for your attention

Link to the German CAP Plan:

[GAP-Strategieplan für die Bundesrepublik Deutschland](#)

Questions?

We will answer
them!¹⁾

¹⁾ Or send us an e-mail at 123@bmel.bund.de

SCAR
Standing Committee
on Agricultural Research

