

Carbon Sink and Environmental Footprint of Borgo Val di Taro Comunalie and linked supply chains

Riferimenti

Tipo di progetto

Gruppo Operativo

Acronimo

CO2 Sink/Pef

Tematica

Gestione aziendale

Information

Time frame

2019 - 2021

Durata

24 months

Partners (no.)

4

Regione

Emilia-Romagna

Comparto

Forestale

Localizzazione

ITH52 - Parma

Costo totale

€98.234,57

Fonte di finanziamento principale

Programma di sviluppo rurale

Programma di sviluppo rurale

2014IT06RDRP003: Italy - Rural Development

Programme (Regional) - Emilia Romagna

Parole chiave

Climate and climate change

Farming/forestry competitiveness and diversification

Supply chain, marketing and consumption

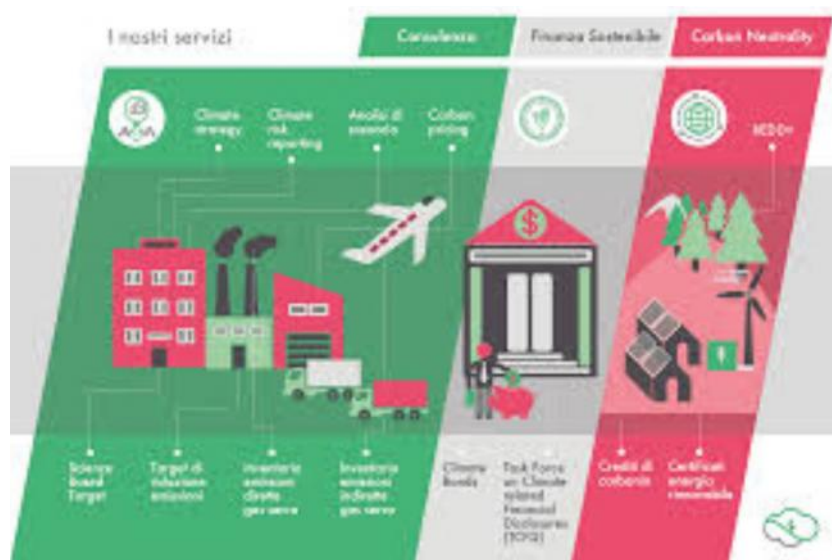
Forestry

Sito web

<https://www.comunalie.com/prog/16/co2sink-pef/>

Project status

completed



Objectives

To develop a CO2 balance and an environmental footprint of Comunalie Parmensi area and wood supply chains linked. The CO2 footprint will be studied with CO2FIX model and the environmental footprint will be studied with PEF Methodology as described in EU Commission Rec. 2013/179. The main goals are:

1. A definition of CO2 Balance of the forest and the environmental impacts of the production activities in the wood chains; creation of a coordination and assessment tool of environmental impacts along the wood chains;
2. An evaluation of the environmental pressure caused by the mushrooms seekers;
3. The scientific validation of the empiric method of forest manage developed by the local operators;

Activities

1. Analysis of the more representative forest areas in Comunalie Parmensi, data collection and elaboration with software associated to the model CO2FIX.
2. Implementation of the PEF Methodology (Product Environmental Footprint) throughout the application of the wood cuts methods to four samples areas of the forest in order to define the model and to collect the data, that will be elaborated with SIMAPRO software.
3. Definition of a SME toolkit for environmental impact assessment to support all the forest enterprises (that are more than one hundred) in order to create a managing system of the environmental impacts.

Carbon Sink e Impronta Ambientale delle Comunalie di Borgo Val di Taro e delle filiere produttive connesse

2/3

<https://www.innovarurale.it/pei-agri/gruppi-operativi/bancadati-go-pei/carbon-sink-e-impronta-ambientale-delle-comunalie-di>

Partenariato

Role	Azienda	Address	Telephone	E-mail
Leader	Consorzio Comunalie Parmensi	Via Nazionale 90 43043 Borgo Val di Taro PR Italy	0525 90155	info@comunalie.com
Partner	Centro di Formazione e Innovazione "Vittorio Tadini"	Località Vignazza, 15 29027 Podenzano PC Italy	0523 524250	
Partner	Fire Pack di Rossi Fabio	Località Case Mazzetta, S/N 43051 Albareto PR Italy	0525 921020	
Partner	Scuola Superiore Sant'Anna di Pisa	Piazza Martiri della Libertà, 33 56127 Pisa PI Italy	050 883521	alberto.mantino@santannapisa.it

Pratiche abstract

Description

The entrepreneurs and the managers of forest enterprises that operate in the Comunalie Parmensi Area will be available a tool (Excel Sheet) that allow them to calculate the environmental impacts of their production activity and the effects on CO2 Balance. The use of this tool allow them to adopt assessment and co-ordinate policies to manage enviromental impacts, to create a base for enviromental certifications (as EPD, EMAS or ISO14040-44) and to make innovative communication on the green value of their activity. Moreover they could stimulate the circolation of carbon voluntary credits versus the interested operators.

Link utili

Titolo/Descrizione	Url	Tipologia
Sito web del progetto	https://www.comunalie.com/prog/16/co2sink-pef/	Sito web
Video del progetto	https://www.youtube.com/watch?v=-3OBAFj_fuA	Materiali utili
Video evento finale	https://www.youtube.com/watch?v=_mwHIBHu6_c	Materiali utili

Carbon Sink e Impronta Ambientale delle Comunalie di Borgo Val di Taro e delle filiere produttive connesse

3/3

<https://www.innovarurale.it/pei-agri/gruppi-operativi/bancadati-go-pei/carbon-sink-e-impronta-ambientale-delle-comunalie-di>
